

NOT JUST A PRETTY FACEPLATE

Get Connected: Connect your M-One to your mixer or other studio devices in stereo or mono via the four balanced 1/4" phone jack connectors.

MIDI: The M-One is compatible with a wide variety of external MIDI controllers and allows you to both recall MIDI presets and real-time control of internal parameters.



Digital I/O: The RCA coaxial S/PDIF Inputs and Outputs on the M-One support 24 bit resolution at 44.1 and 48kHz Sample Rate. The digital Inputs allow for direct processing of virtually any digital source.

Take Control: The external control Input on the M-One allows you to use momentary type pedals to control Tap Tempo, Bypass single or both engines.

Common Sense: Take your M-One with you anywhere in the world. The internal auto-sensing power supply automatically adjusts itself to 100-240V, 50/60Hz.

TECHNICAL SPECIFICATIONS

DIGITAL INPUTS AND OUTPUTS

Connectors: RCA Phono (S/PDIF)
Formats: S/PDIF (24 bit), EIAJ CP-340, IEC 958
Output Dither: HPF/TPDF dither 24/20/16/8 bit
Sample Rates: 44.1 kHz, 48 kHz
Processing Delay: 0.1 ms @ 48 kHz
Frequency Response DIO: DC to 23.9 kHz ± 0.01 dB @ 48 kHz

ANALOG INPUTS

Connectors: 1/4" phone jack, balanced
Impedance, Bal / Unbal: 21 kohm / 13 kohm
Max. Input Level: +24 dBu
Min. Input Level for 0 dBFS: 0 dBu
Sensitivity: @ 12 dB headroom: -12 dBu to +12 dBu
A to D Conversion: 24 bit, 128 x oversampling bitstream
A to D Delay: 0.65 ms / 0.70 ms @ 48 kHz / 44.1 kHz
Dynamic Range: 100 dB typ, 20 Hz - 20 kHz
THD: typ < 92 dB (0.0025 %) @ 1 kHz
Frequency Response: +0/-0.1 dB @ 48 kHz, 20 Hz to 20 kHz
Crosstalk: < -95 dB, 20 Hz to 20 kHz

ANALOG OUTPUTS

Connectors: 1/4" phone jack, balanced
Impedance Balanced / Unbalanced: 40 ohm
Max. Output Level: +20 dBu (balanced)
Output Ranges: Balanced: 20/14/8/2 dBu
 Unbalanced: 14/8/2 dBu
D to A Conversion: 24 bit, 128 x oversampling bitstream
D to A Delay: 0.63 ms / 0.68 ms @ 48 kHz / 44.1 kHz
Dynamic Range: 104 dB typ, 20 Hz to 20 kHz
THD: typ < -94 dB (0.002 %) @ 1 kHz, +20 dBu Output

Frequency Response: Crosstalk:

+0/-0.5 dB @ 48 kHz, 20 Hz to 20 kHz
 < -100 dB, 20 Hz to 20 kHz

EMC Complies with:

EN 55103-1 and EN 55103-2
 FCC part 15, Class B, CISPR 22, Class B

SAFETY Certified to:

IEC 65, EN 60065, UL6500 and CSA E65

ENVIRONMENT

Operating Temperature: 0° C to 50° C (32° F to 122° F)
Storage Temperature: -30° C to 70° C (-22° F to 167° F)
Humidity: Max. 90 % non-condensing

CONTROL INTERFACE

MIDI: In/Out/Thru: 5 Pin DIN
Pedal: 1/4" phone jack

GENERAL

Finish: Anodized aluminum front
 Plated and painted steel chassis

Display: 23 character / 280 icon STN-LCD display
Dimensions: 483 x 44 x 195 mm (19" x 1.75" x 8.2")
Weight: 1.85 kg (4.1 lb.)

Mains Voltage: 100 to 240 VAC, 50 to 60 Hz (auto-select)
Power Consumption: <15 W
Warranty Parts and labor: 1 year

Note: Due to continuous development and standardization all specifications are subject to change without notice

t.c. electronic
ULTIMATE SOUND MACHINES

THE DUAL EFFECTS PROCESSOR



STATE-OF-THE-ART SOUND

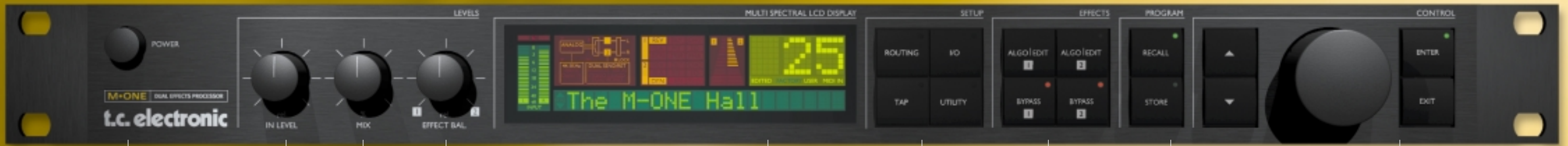
Behind the cool looking exterior of this Dual Effects processor is more than 20 years of know-how and experience in creating high quality sound machines with state-of-the-art sound. The M-One combines our heritage with affordability!

M•ONE DUAL EFFECTS PROCESSOR

HIGH QUALITY ALGORITHMS

More than 20 high quality algorithms enable you to make music instead of wasting time programming! Let TC's world acclaimed intuitive user interface take you there fast and easy.

t.c. electronic
ULTIMATE SOUND MACHINES



POWER SECTOR

Power up your M-One anywhere in the world. The M-One's power supply automatically adjusts to the voltage supplied.

IN LEVEL

Use the IN LEVEL knob to change the Input level.

MIX

Adjust the global mix between wet and dry signal with the MIX knob.

FX BALANCE

Change the balance between Engine 1 and Engine 2 using the EFFECT knob.

COMPLETE OVERVIEW

The LCD DISPLAY gives you a complete overview of Input levels, selected Input, Clock source, Routings, Algorithms used etc.

SETUP

Select the wanted Utility, Routing, I/O setup, Tap Tempo or Tap menu.

EFFECTS

Press ALGO/EDIT to enter the Edit display and the Algorithm Change display. Press BYPASS to select a Bypass mode e.g. 0% mix, FX In or FX Out.

PROGRAM

Recall your desired preset, edit the preset and store it in the User bank.

CONTROL

Change values with the CONTROL wheel and press ENTER to verify your choice. To end or disapprove an action use EXIT.

CUTTING EDGE TECHNOLOGY

TC Electronic is renowned as a manufacturer of cutting edge technology for the professional Audio Industry. Once again TC's engineers have succeeded in developing a Dual Engine Multi-effects processor which will revolutionize the way you work with your effects!

AFFORDABILITY

The M-One comes with Dual Engine structure, 1/4" balanced jack I/Os, S/PDIF Digital I/O (24 bit), 44.1-48kHz internal processing, various Routing options and more than 20 high quality algorithms. The introduction of M-One also adds a brand new feature to TC's Ultimate Sound Machines: Affordability!

FLEXIBILITY

Use the M-One's Dual Engine to run two of the best sounding reverbs or other quality effects simultaneously without compromising sound. The Easy Parameter Level gives you more flexibility to create cool effects and control of all important parameters right at your fingertip.

QUALITY REVERBS

The M-One gives you a wide range of high quality reverbs from the classic Halls and Rooms to new and grainy snare reverbs such as Live and Plate. Use the M-One's many high quality reverbs to create sound reflections in various environments. Now you can add different levels of depth to your source material, easily.

HALL

These "classic style" reverbs simulate the reverberation of very large rooms with very high ceilings. They have unobtrusive reflections with a density and naturalness you have only been dreaming about, until now. The Hall reverbs are especially good with vocal, acoustic guitar and piano.

ROOM

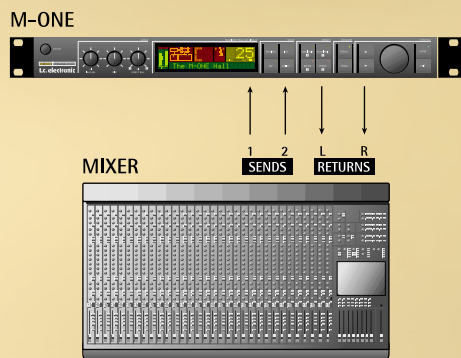
TC Electronic's famous Room reverbs generate a vast array of room settings with different sizes and surfaces. The Room reverbs make your music come alive by adding ultimate realism and texture to your mix.

LIVE

The Live algorithms are the grainy type of reverbs known as the typical 1980s live reverbs. Use these reverbs, when "cutting through" any PA system.

DUAL SEND/RETURN

Use the M-One Engines in the Dual Send/Return setup, and get two independent effects processors. Connect one Auxiliary to the Left Input of the M-One, and a second to the Right input. The stereo Output of the two Engines are now mixed internally, and can be returned to a single stereo effects return on your mixing console, giving you two full blown stereo effects simultaneously.



PLATES 1 & 2

The most basic sounding reverbs in the M-One are the "non-digital", mechanical sounding ones, which make metal plates superfluous: Create the artificial reflections typically found on "old mechanical" reverbs! Plates 1 & 2 are especially good on drums and vocal tracks.

OTHER USEFUL ALGORITHMS

Bring new life to your mixes with TC's unique Compressor and Limiter algorithms. You can add incredible Delays, wide Chorus or enhance the details of your source material with the Parametric Equalizers. The M-One has even more algorithms, such as Flanger, Pitch, Gate, Expander, De-esser, Tremolo and Phaser. All the algorithms are of the well known TC Electronic sound quality. Do not waste your time programming - experiment with the many reverbs of the M-One to hear which setting suits your source material best.

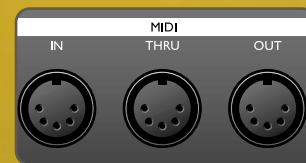
PRESETS

The M-One comes loaded with 100 high-grade Factory presets, covering almost any imaginable application. On top of that the M-One can store up to 100 of your favorite presets in the User bank. When satisfied with your preset you just hit the STORE key to save it. It is so simple, that you almost forget that you are actually making presets! In short, the M-One gives you access to all the tools you need, whenever you want to create quality effects e.g. Modulation- and Pitch effects as well as EQ, De-esser and Dynamics!



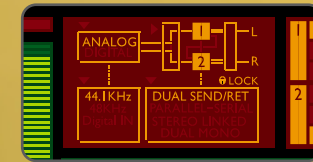
MIDI SECTION

All effect parameters can be accessed via standard MIDI controllers and allows real-time control and automation with virtually any sequencer or other MIDI devices. You can also use MIDI to dump & save the entire user bank to a MIDI sequencer. Additionally, the TAP function of the M-One can be locked to the incoming MIDI clock.



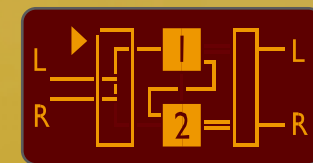
ROUTINGS

The powerful Dual Engine structure of the M-One gives you flexible routing of the two Engines. You can easily run two full-blown reverbs simultaneously without losing the power and integrity of your original tone. Select any of the 6 different routing possibilities e.g. Parallel, Stereo Linked or Dual Mono to match your specific requirements.



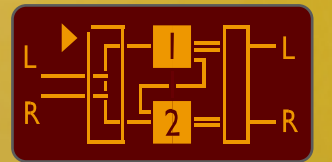
SERIAL

In the Serial routing the signal will always pass Engine 1 before Engine 2. This can be very useful for you, when you want to combine the two Engines to one effect, e.g. select the De-esser in Engine 1, and a bright reverb in Engine 2. By doing this, the De-esser will suppress the "sss" sound of the vocal, enabling you to use bright and open reverbs without getting too much sibilance.



PARALLEL/SERIAL

Use this routing option, when you want separate Inputs on the two engines but still want the two effects to be partially combined. You can have e.g. a long delay running in Engine 1 and a large Hall reverb on Engine 2, both effects used for lead vocal. The repeats from the Delay are dry compared to the reverberated vocal. To solve this, you just bleed a bit of the Delay repeats from Engine 1 into the reverb in Engine 2 by turning up the Engine 2 Feed parameter. Now both the Vocal and the Delay repeats are reverberated!



DUAL SEND/RETURN

This is the optimal choice if you want to use the M-One as two independent effects processors! All you have to do is send left Input to the M-One's Engine 1 and right Input to Engine 2 from two separate Auxiliaries from you mixer. Then connect M-One's Output to a stereo return channel. The two effects are being summed to two channels. You are now using the M-One as two separate stereo effects with a common two channel Output.

